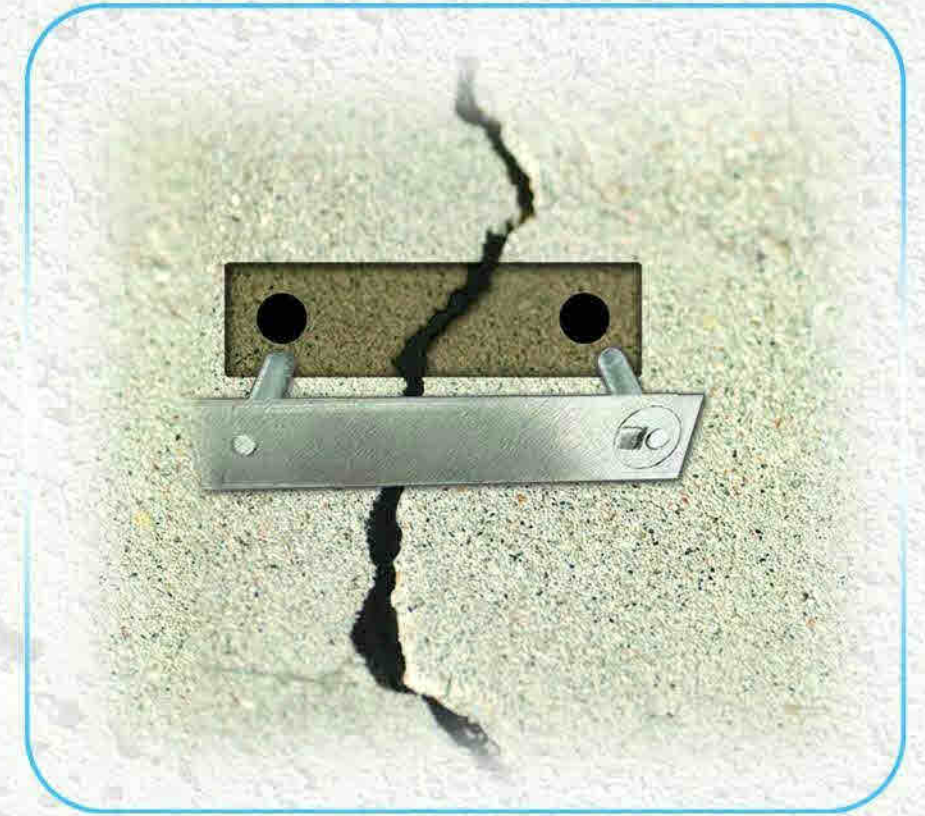


TORQUE LOCK™

The Torque Lock™ Staple is a revolutionary technique used to repair structural cracks on any solid cement based surface. Using its patented Cam Lock™ technique, it stabilizes the crack by creating up to 5000 lbs of compression torque for each staple installed.



STAY A STEP AHEAD OF YOUR COMPETITION!

3 Sizes Available:

- TL10
- TL30
- TL50

The new revolution to structural crack repair. To stabilize the crack, the Torque Lock™ Staple is the only mechanical approach to permanently repair structural cracks or fractures in any type of concrete structure.



For further inquiries call 818-436-2953 or email us at info@torque-lock.com